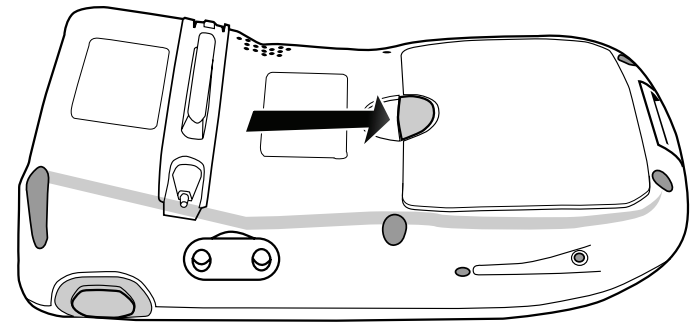


PA600GPRS SIM Installation

Quick Start Guide

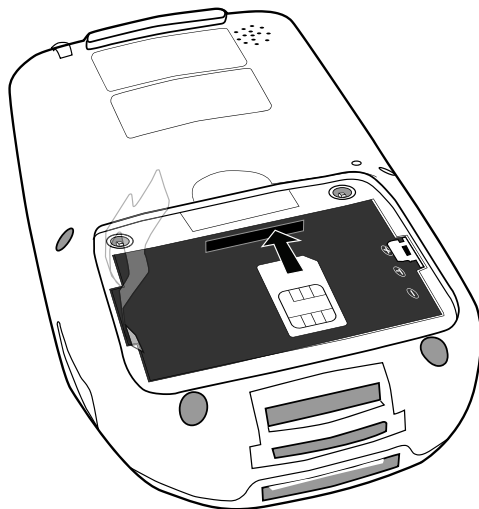
1 Open Battery Cover

1. Turn the PA600 so the screen and keypad are facing down.
2. With the back of the PA600 facing you, open the battery compartment by pushing the latch in the direction of the arrow (see below) and lifting up.
3. Lift the battery cover upward and remove.

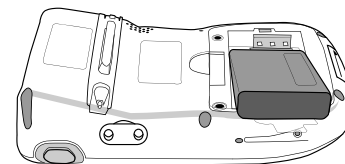


2 Insert SIM Card

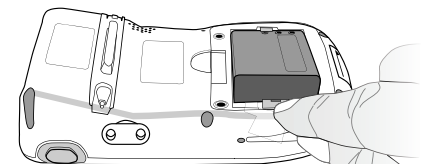
1. Locate the SIM card slot inside the battery compartment (See diagram to the right for slot location).
2. Insert the SIM card with the gold contacts facing up (Notched corner of the SIM card should be positioned as shown in the diagram to the right).
3. Push the SIM card into the slot until you hear a click. Then slide the locking tab to the right to secure the card in place. (Use the stylus to slide the locking tab).



3 Insert Battery



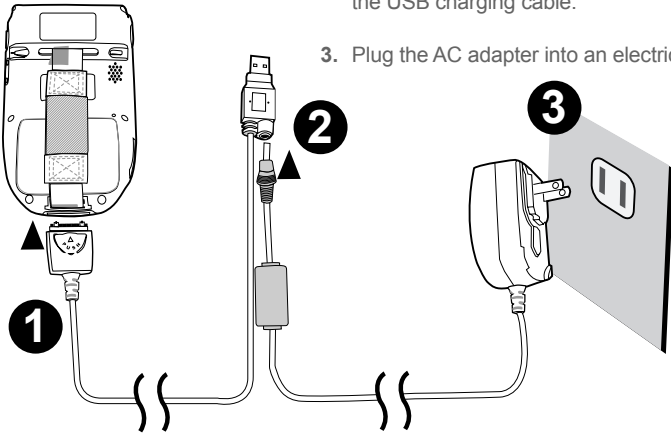
1. Insert the battery, making sure the gold battery contacts are aligned with the battery compartment contacts. (Insert battery on top of plastic tab)



2. Press the battery into place while simultaneously pulling the plastic tab and battery hook until the battery clicks into place.
3. Slide the battery cover back into place.

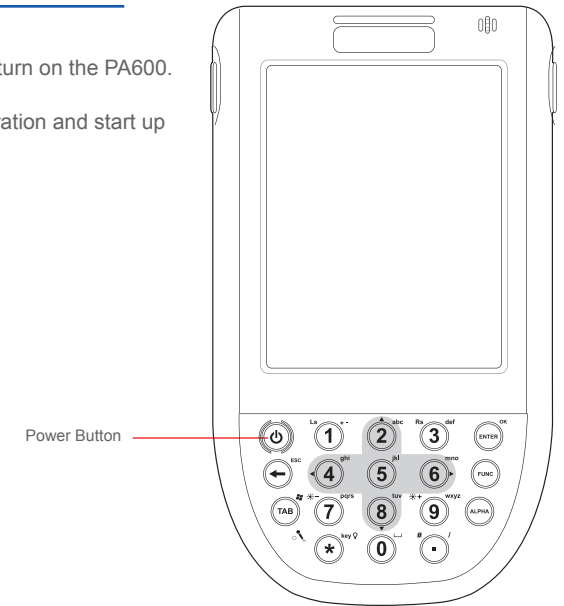
4 Plug In

1. Insert the power/communication connector on the USB charging cable into the bottom of the PA600.
2. Insert the AC adapter cable into the power jack on the USB charging cable.
3. Plug the AC adapter into an electrical outlet.

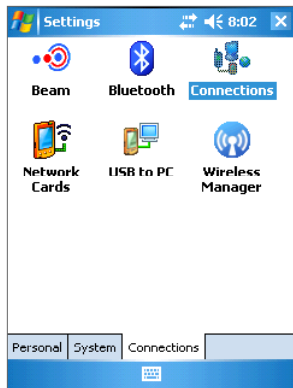


5 Power On

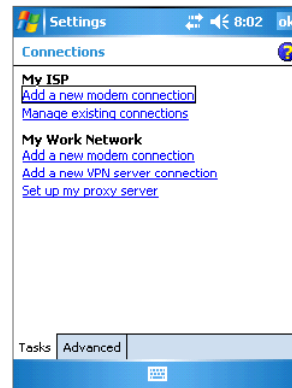
1. Press the power button to turn on the PA600.
2. Follow the on-screen calibration and start up instructions.



6 Make New Connection

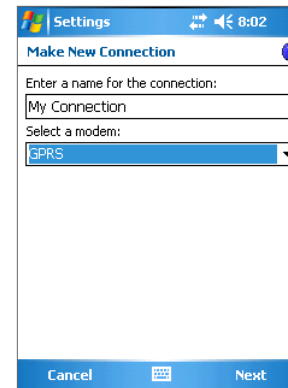


1. Choose Start > Settings. Select the Connections tab. Choose the Connections icon.

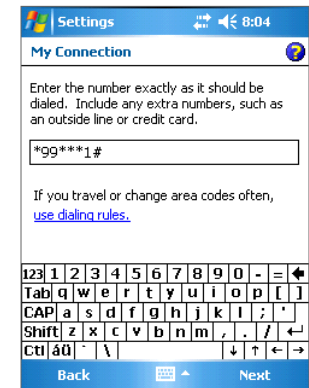


2. Select "Add a new modem connection".

7 Insert a Name

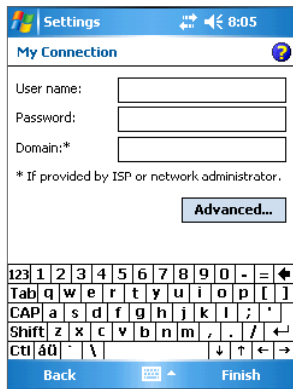


1. Enter a name for your connection and select GPRS for modem.
2. Click Next.

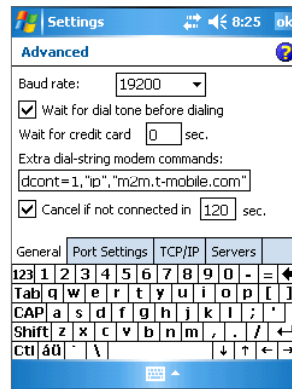


3. Enter the phone number: *99***1#
4. Click Next.

8 Configure

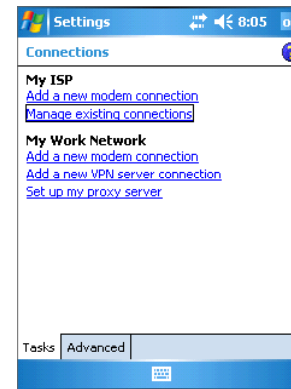


1. No user name or password is needed.
2. Click Advanced.

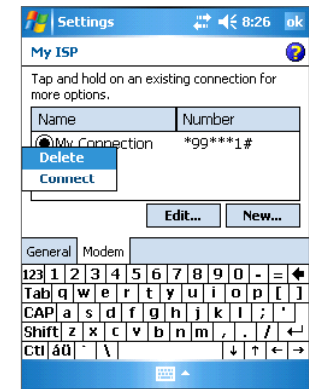


3. Enter the following into the Extra dial-string modem commands: +cgdcont=1,"ip","m2m.t-mobile.com"
4. Click Advanced.

9 Connect

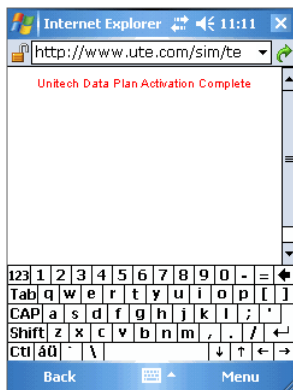


1. To connect, select: "Manage existing connections"



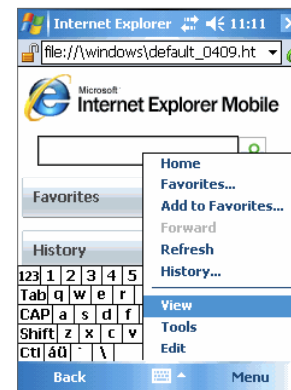
2. Click and hold the name of your connection and choose "Connect"

10 Self-Test



1. To test your connection, visit the Unitech test site: www.ute.com/sim/test.html
2. If you see: "Unitech Data Plan Activation Complete" then you are successfully connected.
3. If you do not see the above message, please review the previous steps to establish connectivity to the network.
4. It is highly recommended that you disable "show pictures" in your browser settings to ensure you don't exceed the 500K monthly limit on the data plan.

11 Disable "Show Pictures"



1. From Internet Explorer select Menu > View



2. Then uncheck Show Pictures